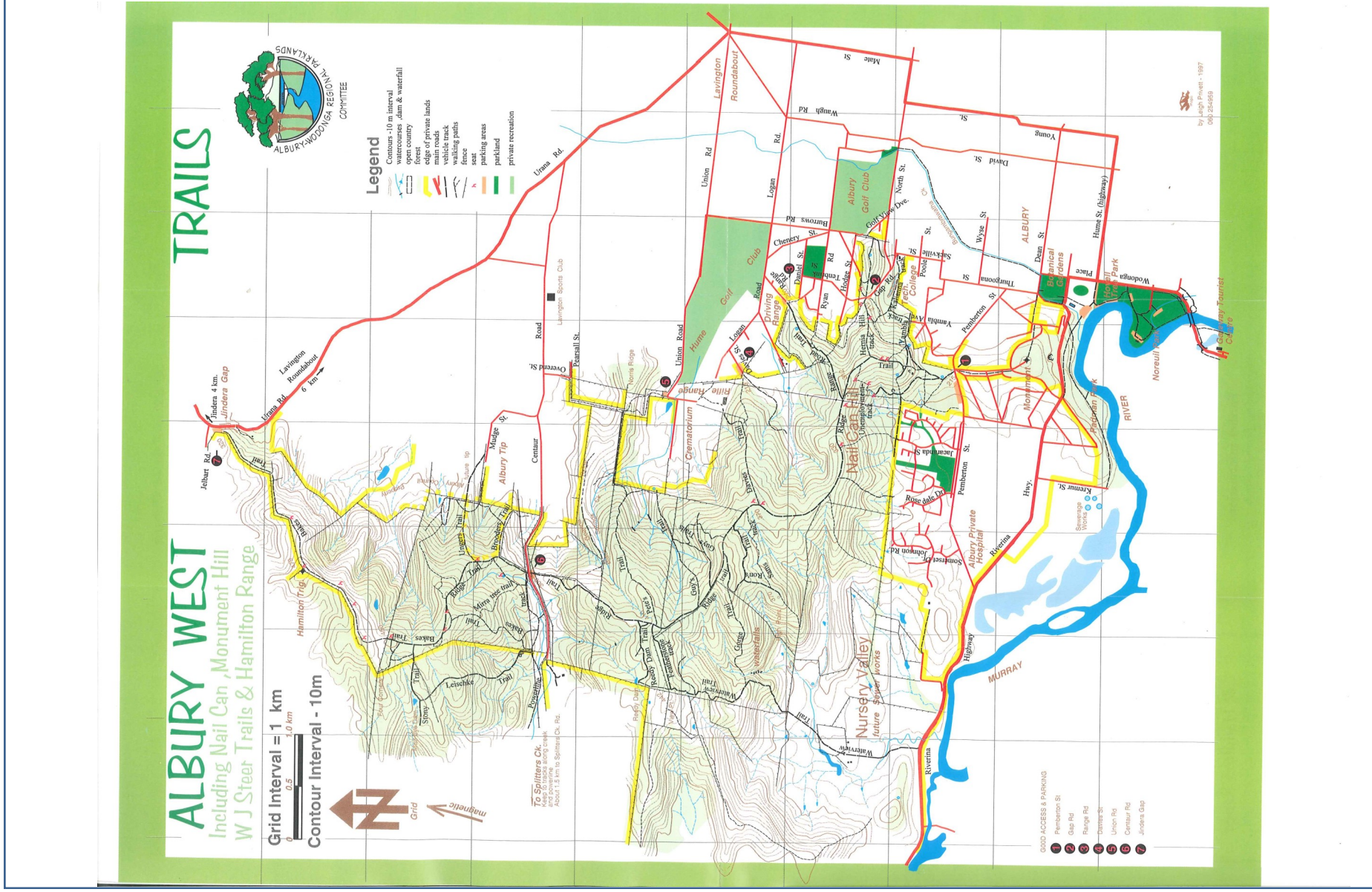


Nature Trail Notes



Bush parks and trails
connecting community

Nail Can Hill Nature Trails





Things to look out for...

Mistletoe is common in the Eucalypt trees here, with at least 4 different species found. A rich source of nectar, fruits and nutrient dense leaves, it provides valuable habitat for native birds such as honeyeaters, as well as insects, possums and gliders. The dense structure provides good cover for native birds to perch and nest. You may even spot a threatened Regent Honeyeater nesting within.



Varnish Wattle—*Acacia verniciflua*. Producing distinctive balls of soft yellow flowers in spring, this beautiful small wattle is named for the shiny appearance of new leaves.



Handsome flat-pea - *Platylobium formosum* is a straggly understory shrub between 1 and 2 metres high with wiry stems and heart shaped leaves. It's form is more than balanced by it's very 'handsome' pea flowers in spring.



Bulbine Lily—*Bulbine bulbosa*
This sunny lily provides a stunning display in spring, flowering in masses throughout the bush. Although each flower last only one day, each stem bears many flowers that open over a number of days. The corms are a traditional bush tucker, providing a sweet and nutritious food when cooked.



Yam Daisy or Murnong—*microseris lanceolata* Another traditional bush food plant, the Yam daisy resembles common Cape-weed, with a single yellow flower. Usually seen scattered through the bush, the flowers come and go within a very short period in spring.



Early Nancy— *Wurmbea dioica*
Known as the harbinger of spring, Early Nancy is usually the first of the spring wildflowers on nail Can Hill. These delightful fresh white flowers promise better weather and longer days—be happy to greet them!

